

2022



# ANNUAL REPORT

Providing comprehensive addiction  
services to New Hampshire's  
Monadnock Region.



# CEO Statement

Reality Check is grateful for the federal, state, and local support which enables us to continue providing addiction services in the Monadnock region. Your support helps us meet our mission of preventing use, securing treatment, helping people find recovery, and educating employers about the value of supporting employees with substance use issues.

We provide prevention education to 3 school districts and the communities they serve, drug & alcohol counseling and treatment referrals, recovery services, employer services to become Recovery Friendly, and addiction training to help grow NH's addiction workforce.

If you would like to join forces and identify new solutions to this epidemic, we are waiting for you!

Reality Check warmly thanks its staff, donors, partners, volunteers, coaches, contractors, and board members for helping to make a difference.



Mary Drew, MS, MEd, CPS  
CEO & Founder



## Mission

Holistically reduce drug and alcohol use, addiction, and overdose, and the related social and economic costs to people, families, and businesses by providing comprehensive addiction services to NH residents.

## Vision

People and communities support & empower one another.

## Board of Directors

**Mary Drew**, MS, MEd, CPS

**James Beeler**, MHSA

**Taylor Beavan**, BS

**Mark Hower**, BA, MBA

**Amber Dewey**, NP-C,

**Don Guiou**, MPS, CISSP

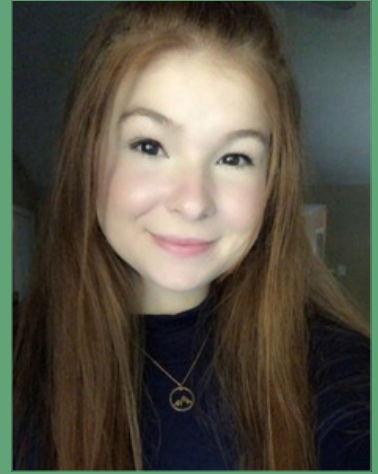
# Staff & Contractors



**Mary Drew, MS, MEd,  
CPS  
CEO & Founder**



**Catherine Todd  
Finance Director**



**Sarah Desaulniers, BA  
Substance Use  
Prevention Specialist**



**Sarah Johnston, BS,  
CPS, CRSW  
Supervisor**



**Anena Hansen  
Employer Services  
Coordinator**



**David Orgaz  
Recovery Coach**

Our success is a direct result of working together with collaborative volunteers, schools, businesses, and partners in the communities we serve.

## Prevention By The Numbers

**3,023**

Social Media Posts

**955**

People Received Training

**4**

Prevention Evidence-based  
Curricula in Schools

**34**

School & Community Events

**7**

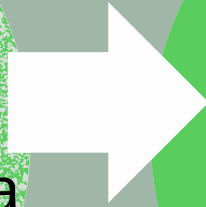
Mountains Climbed



# Recovery & Employers Services By The Numbers

**23**

People worked with a  
Recovery Coach



**352**

Recovery Coach  
Sessions

**70**

Referrals to  
Treatment

**383**

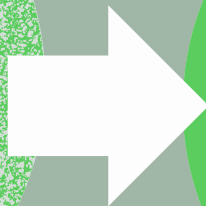
Support Group  
Attendees

**92**

Employers  
reached

**8**

Addiction  
Trainings



**249**

People  
trained!



# Finances

Revenue			
DONATIONS		\$	35,952.96
MUNICIPALITIES		\$	19,093.00
GRANTS		\$	315,115.56
MERCHANDISE SALES		\$	60.95
TRAINING/EVENTS		\$	25.00
	Total		\$ 370,247.47

Expenditures			
SALARIES		\$	195,899.87
PAYROLL TAXES		\$	15,664.05
PAYROL BENEFITS		\$	39,322.48
RECOVERY COACHING		\$	1,829.49
PROGRAMS & CURRICULUM		\$	4,426.98
MEDIA & ADVERTISING		\$	17,255.98
SOFTWARE & SUBSCRIPTIONS		\$	9,888.42
MEETINGS & EVENTS		\$	1,591.49
OFFICE SUPPLIES & EQUIP.		\$	8,923.58
TRAVEL & MILEAGE		\$	8,016.13
PRINTING		\$	8,160.03
RENT		\$	22,200.00
TELEPHONE/ INTERNET		\$	3,363.80
CONTRACTORS		\$	37,916.64
PROFESSIONAL DEVELOPMENT		\$	3,160.40
INSURANCES		\$	10,553.59
REPAIRS & MAINTENANCE		\$	536.77
BANK CHARGES & FEES		\$	2,311.11
MEALS & ENTERTAINMENT		\$	461.72
CHARITABLE CONTRIBUTIONS		\$	1,396.77
EMPLOYEE APPRECIATION GIFTS		\$	1,136.61
	Total	\$	394,015.91

reality check



# Looking Back . . .





# HOW CAN YOU HELP BE A PART OF THE SOLUTION?



1 Volunteer

2 Donate or fundraise!

3 Visit us!

4 Follow us on social media

5 Have an idea? Give us a call!



## ***IN DEDICATION AND HONOR OF***

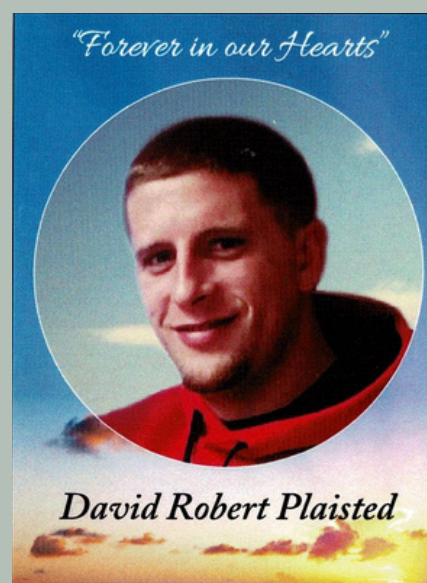
PHILIP SPAGNUOLO

August 30, 1967 - June 22, 2021



DAVID PLAISTED

July 15, 1992 - January 31, 2021



RealityCheckNow.Org 603.532.9888  
17 Turnpike Road, Jaffrey, NH 03452

reality check

